

- 9) Insert pipes P into the posts by sliding through the holes in C1 and C2 and into the corresponding holes in B and D.
- 10) Using a 1" bit, drill the seven holes in each G. Tack pieces G in position, flush with the tops of B, C1, and C2, and with the "first" mark on D. On the opposite side, drill the four 1" holes in the posts to a depth of 1" as shown (Fig 5). Changing to a 5/16" bit, drill through the centre of the countersunk holes all the way through the posts and pieces G. If your bit is not long enough, you may have to remove the pieces G to drill the holes all the way through. Bolt the pieces together with sixteen 5" carriage bolts, the nuts fitting into the countersunk holes in the posts. Repeat this procedure to attach piece H to the posts D and E.
- 11) Slide pipes N in position between pieces G. Nail on pieces K and L with 2" nails. These pieces prevent the pipes from coming out.
- 12) Drill two 5/16" holes in pipe R, one 6 5/8" from one end, the other 4 7/8" from the other. There should be 4 1/4" between them. Drill the two holes in F, each 48" from either end, 1 1/2" from each edge, and 1/4" between the holes. Slide R through the hole in post A as shown (Fig 6), the end with the hole 4 7/8" from the end going in first. After the pipe comes out of the other side of the post, slide pieces J onto the top of R, and slide the bar into the hole in post B. Bolt F onto R with two 3" carriage bolts, the nuts going underneath. Pieces J do not attach to anything, they are there only to prevent the prying of the fingers. Nail on piece M with 1 1/2" nails to prevent R from coming out.
- 13) Attach the swing Q to H by inserting rope through the holes and tying a knot in the ends of the rope. Ensure the knots are large enough so that the rope will not pull out.
- 14) Sand the project and finish with stain or paint according to manufacturer's instructions. Do not use leaded paint.

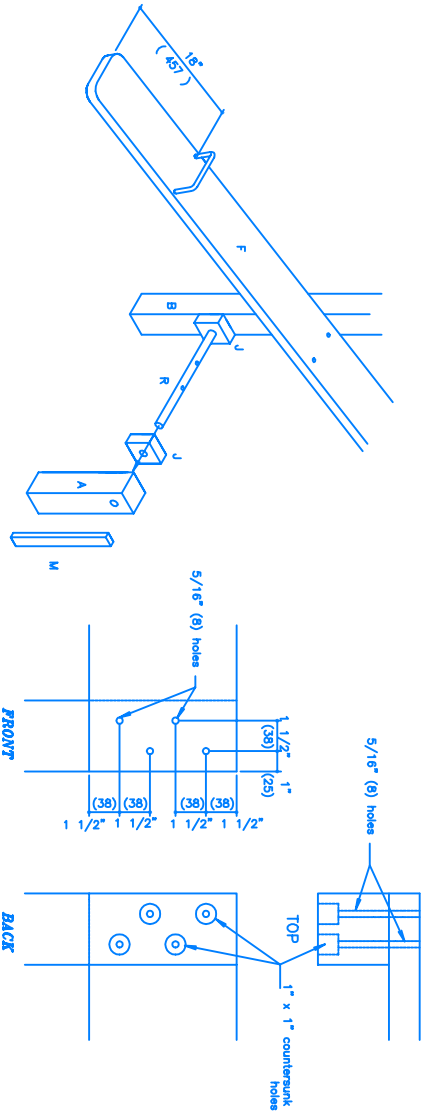
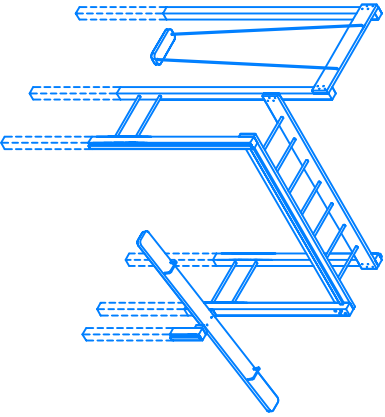
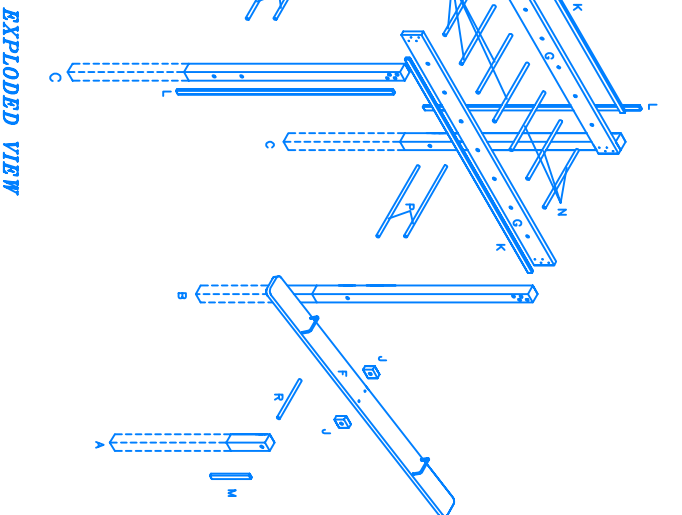


FIGURE 6



EXPLODED VIEW